

A new scuttle-fly species in the genus *Chaetopleurophora* Schmitz (Diptera: Phoridae) from China

Guangchun LIU^①, Jianfeng WANG

College of Life Science and Bioengineering, Shenyang University, Shenyang, Liaoning 110044, China

Abstract: A new scuttle-fly species in the genus *Chaetopleurophora* Schmitz, *C. latisetalis* sp. nov. from southern China, is described and illustrated. This new species is similar to *C. pygidialis* Schmitz, 1941, but different with two apical processes of right side of epandrium, arc-shaped apex of subepandrial lobe and left surstylus long, parallel on both sides. The type specimens are deposited in the Natural History Museum of Shenyang University (NMSU).

Key words: phorids; Brachycera; taxonomy

中国毛蚤蝇属一新种（双翅目：蚤蝇科）

刘广纯^①，王剑峰

沈阳大学生命科学与工程学院，辽宁 沈阳 110044

摘要：记述中国南方蚤蝇科毛蚤蝇属 1 新种：缘鬃毛蚤蝇 *Chaetopleurophora latisetalis* sp. nov.。该新种与 *C. pygidialis* Schmitz, 1941 相似，区别在于本新种生殖背板右侧端部具 2 个尖突，生殖背板副叶具弧形端部，左侧尾叶长，两侧平行。

关键词：蚤蝇；短角亚目；分类

Introduction

The genus *Chaetopleurophora* Schmitz, 1922 is a group of medium to large sized scuttle flies, which includes 14 extant species distributed in Palearctic, Nearctic and Oriental Regions (Brown 1992; Disney 2003; Michailovskaya 2004; Nakayama 2007). This genus is characterized by the following morphological characters: supra-antennal setae present; anepisternum setulosus, with a long seta; wing vein R_{2+3} present; hind tibia with ctenidia or more than eight setae apart from apex and male terminalia with subepandrial lobe. In China, only one species, *C. asiatica* Borgmeier was recorded from Taiwan (Borgmeier 1962). In the present paper, a new species is recorded and illustrated from Jiangxi and Guangdong, China.

Accepted 20 March 2025. Published online 22 August 2025.

① Corresponding author, E-mail: liugc@syu.edu.cn

Material and methods

Specimens were collected by sweeping nets and Malaise Traps and stored in 75% ethanol. The head, legs and wing were detached and mounted on slides according to the method of Disney (1994). Photos were made using a microscope Leica M205A and Leica DM2500B with the help of a CCD 450 multi-focus imaging system. The terms used follow Cumming and Wood (2017). The type specimens are deposited in the Natural History Museum of Shenyang University (NMSU), Shenyang, China.

Taxonomy

Chaetopleurophora latisetalis sp. nov. (Fig.1)

Male. Body length 3.38–3.40 mm. Frons brown, with 60–70 setulae. Supra-antennal setae long and close to each other; the first row of frons setae slightly convex; second row of frons setae strongly convex. Postpedicel globose, whitish brown. Palpus whitish brown, with 10–12 setae apically and ventrally. Thorax with dark brownish scutum and scutellum; mesopleuron brown. Scutellum with 2 setae and 2 short setulae. Wing length 2.70 mm, width 1.06 mm. Costal index 0.49, costal ratio 4.73 : 2.39 : 1, costal cilia length 0.06 mm. M_1 originates behind R_s bifurcation, curved basally and arc-shaped at distal half. Wing veins brown, membrane grayish brown. Halter whitish brown. Fore leg light brown; mid leg and base of hind femur brown; apical femur, tibia and tarsus of hind leg dark brown. Fore tibia with 1 seta at basal 1/3. Mid tibia with 1 anterodorsal and 1 dorsal seta at basal 1/5, 1 anteroventral seta at distal 1/4 and 1 ventral spur. Hind tibia with complete dorsal ctenidia, 1 dorsal seta at basal 1/4, 1 dorsal seta at apical 1/6 alternately, 1 anteroventral spur and 2 ventral spurs. Abdomen brown, tergites with short setulae, longer on both sides of tergite II. Terminalia brown, globose. The left side of epandrium mostly naked; left surstylus long and band-shaped and parallel on both sides, membranous apically; with two rows of long setae along dorsal and ventral edge alternately. Right side of epandrium wide and large, with 2 apical processes, 1 row of long setae subapically; subepandrial lobe long, arc-shaped on apex. Hypandrium naked basally and microtrichus apically; right lobe longer than left lobe. Anal tube short, whitish yellow, setulose.

Holotype. ♂ (JX20090001), **China**, Jiangxi, Wudongshan, 430 m, 25-IV-2009, Yi LI.

Paratype. 1♂ (GD20200009), **China**, Guangdong, Shaoguan, Nanling National Nature Reserve, 29-IV-2020, Zhiqiang LI.

Etymology. The specific epithet is derived from Latin words “latus”(edge) and “setalis” (seta), indicating the seta characters of left surstylus.

Remarks. In the key to *Chaetopleurophora* of Nakayama (2007), this new species runs to couplet 2 to *C. pygidialis* Schmitz, 1941. It differs from the latter by brownish body, two apical processes of right side of epandrium, arc-shaped apex of subepandrial lobe and left surstylus long, parallel on both sides. This species is different from *C. tropicola* Beyer, 1958, by brownish frons, scutum and scutellum, more convex second row of frons setae and very short front pair of scutellar setae. The new species can be distinguished from *C. asiatica* Borgmeier, 1962 by convex second row of frontal setae and yellowish basal part of hind femur.

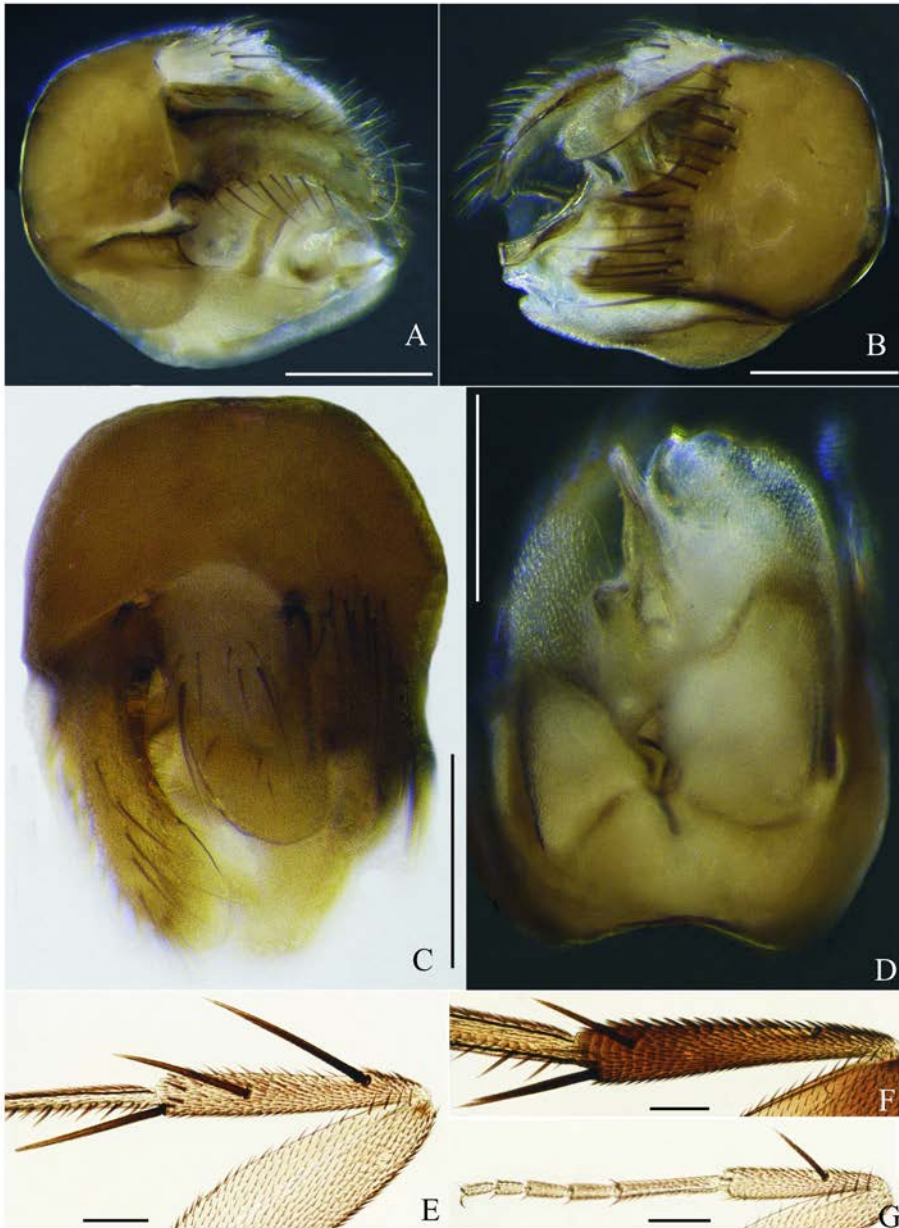


Figure 1. *Chaetopleurophora latisetalis* sp. nov., ♂. A–D. Terminalia: A. Left view; B. Right view; C. Dorsal view; D. Ventral view; E. Mid tibia, anterior view; F. Hind tibia, anterior view; G. Fore tibia, anterior view. Scale bars = 0.2 mm.

Acknowledgements

This project was funded by the National Natural Science Foundation of China (31372245).

References

- Beyer EM. 1958. Die ersten Phoriden von Burma (Diptera, Phoridae). *Commentationes Biologicae, Helsingfors*, 18: 3–72.
- Borgmeier T. 1962. Versuch einer Übersicht über die neotropischen *Megaselia*-Arten, sowie neue oder wenig bekannte Phoriden verschiedener Gattungen (Diptera, Phoridae). *Studia Entomologica, Petropolis*, 5: 289–488.
- Brown BV. 1992. Generic revision of Phoridae of the Nearctic region and phylogenetic classification of Phoridae, Sciadoceridae and Ironomyiidae (Diptera: Phoridae). *Memoirs of the Entomological Society of Canada*, 164: 1–144.
- Cumming JM & Wood DM. 2017. Adults Morphology and Terminology. In: Kirk-Spriggs AH & Sinclair BJ (Eds.), *Manual of Afrotropical Diptera (Vol. 1). Introduction Chapter and Keys to Diptera Families*. South African National Biodiversity Institute, Pretoria, pp. 89–133.
- Disney RHL. 1994. *Scuttle Flies: The Phoridae*. Chapman & Hall, London, XII+467 pp.
- Disney RHL. 2003. A new Nearctic species of *Chaetopleurophora* Schmitz (Diptera, Phoridae). *Entomologist's Monthly Magazine*, 139: 167–169.
- Michailovskaya MV. 2004. *Scuttle Flies (Diptera, Phoridae) of the Far East of Russia*. Vladivostok: Dalnauka: 148 pp.
- Nakayama H. 2007. Systematic and morphological studies of the genus *Chaetopleurophora* Schmitz (Diptera: Phoridae) occurring in Japan. *Entomological Science*, 10: 395–406.
- Schmitz H. 1922. Über das Vorkommen von Kreuzborstenreihen bei Phoriden. *Schriften der (Königlichen) Physikalisch-Ökonomischen Gesellschaft Zu Königsberg*, 63: 130–131.
- Schmitz H. 1941. Phoridae. In: Lindner E (Ed.), *Die Fliegen der Paläarktischen Region, Vol. 4*. E. Schweizerbart'sche-Verlagsbuchhandlung, Stuttgart, pp. 65–128.